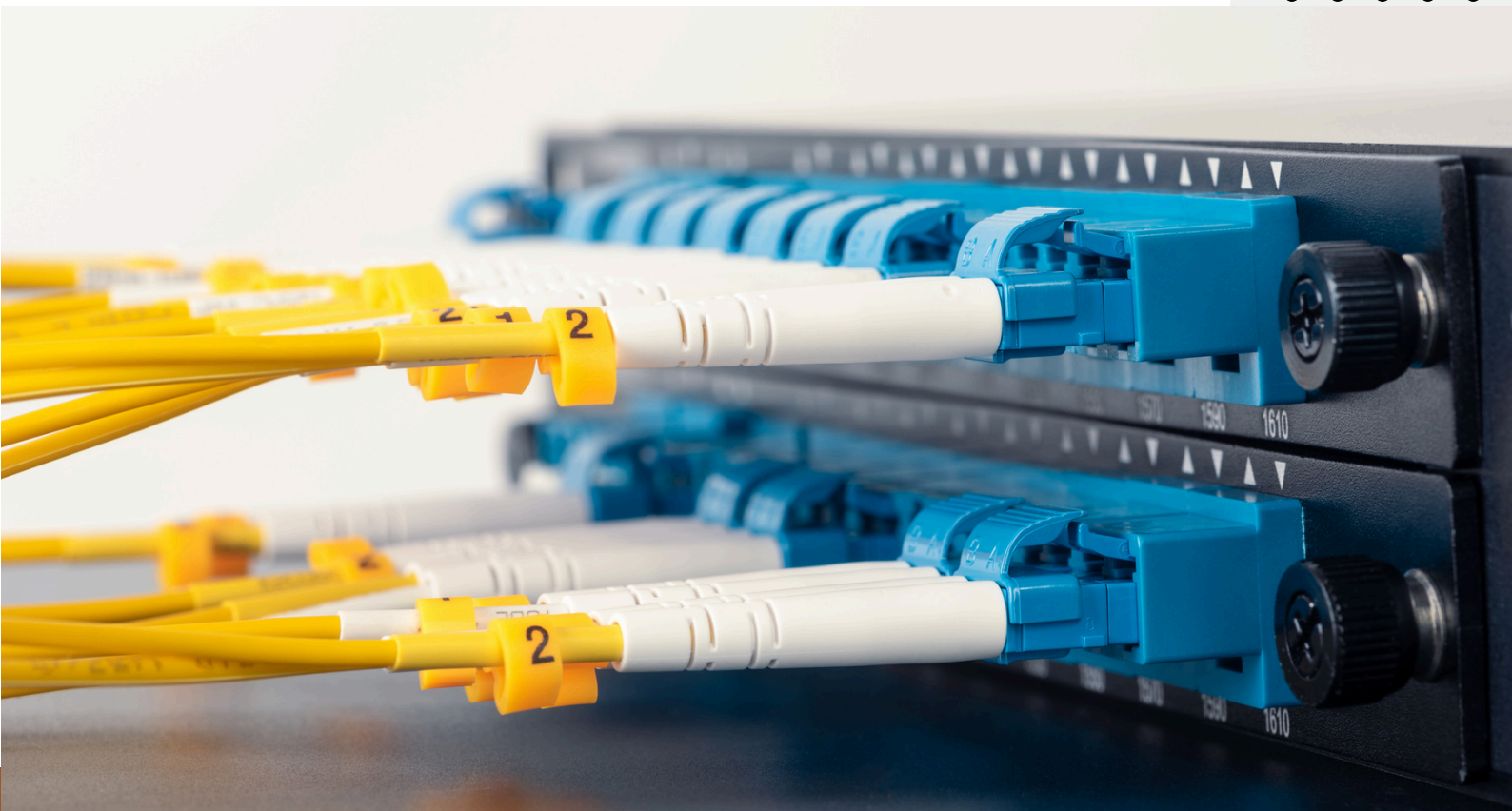
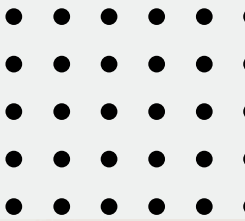


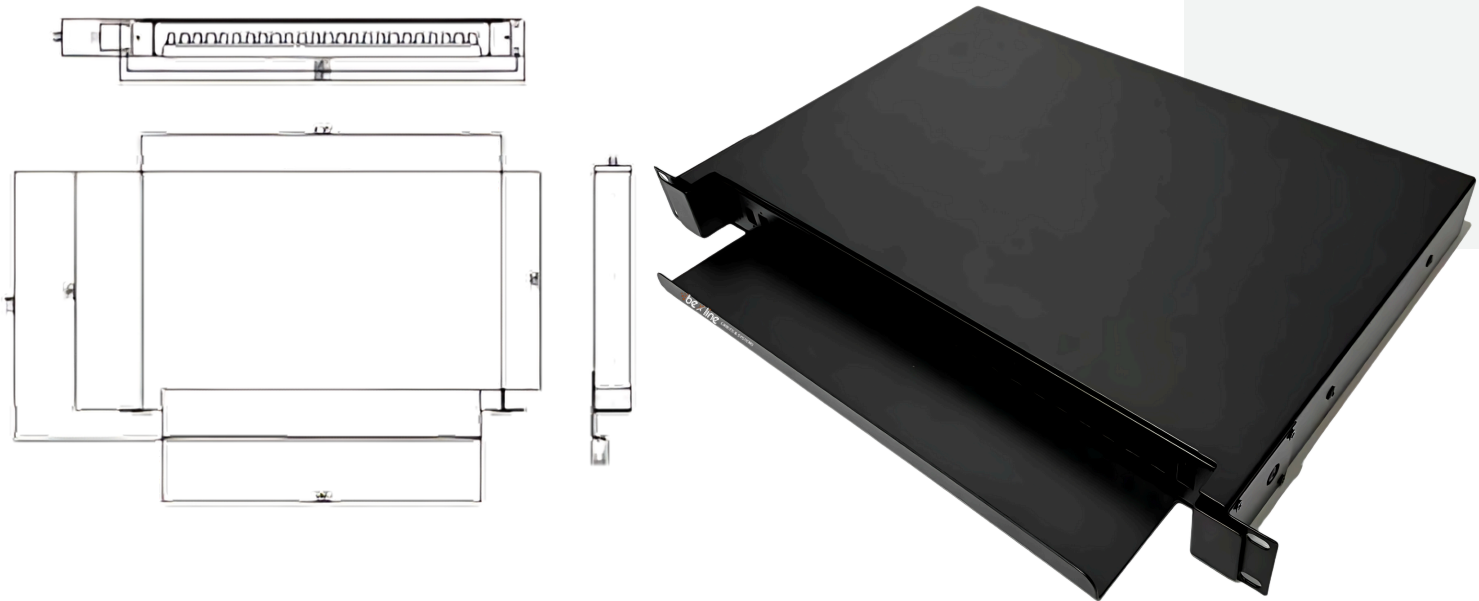
Fiber Optic Patch Panel

SC Simplex - SC Duplex



P.N:BXFP-24SX-S

Fiber Patch panel - SC - 24 port Simplex Rack-mount



PRODUCT CLASSIFICATION :

● Regional Availability	CHINA
● Portfolio	BEXLINE
● Product Type	(ODF) Patch Panel
● Unit	24 Port - Simplex SC Connector

General Specifications :

● Maximum Capacity	24C Simplex SC Connector - 48C Duplex LC Connector
● ProductHeight	1 U
● Port Type	ST FC SC LC
● Connector Type	SC OR LC
● mountingtype	19"Standar Rack
● Size	483 * 350 * 44.5 mm
● G.weight	4.6 kgs
● Thickness	1.2 mm
● Style	Sliding Type
● Material	Cold Rolled Steel - Black

Material And Finish:

● Temperature Range	-25°C to +60°C (operating), -40°C to +70°C
● Humidity	≤90% at 30°C
● Air pressure	70kPa-106kPa

Standard 19 "rack-mounted installation method,The excellent design provides reliable protection for the termination of optical cables and the installation of optical fiber adapters,Compact in structure, small in size,light in weight, and available in multiple specifications , The access to and from optical fibers is convenient and flexible, and there is ample space for optical fiber storage, The multiple fixed positions of optical cables on the back make the fiber feeding convenient and flexible, and facilitate the protection of optical cable stripping ,The bending radius of optical fibers and pigtails shall not be less than 30mm

ROHS Compliant

UK-ROHS Compliant

Fiber Patch panel - SC - 24 port Duplex Rack-mount



General Specifications :

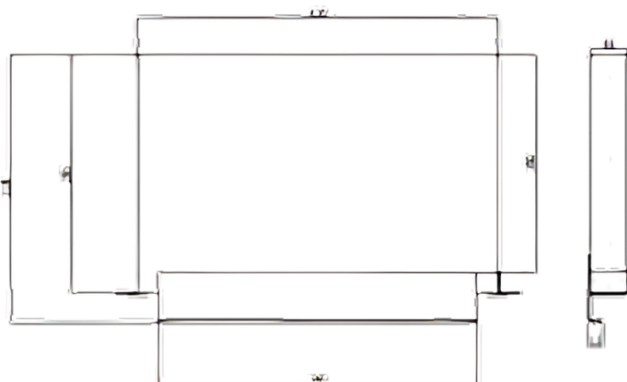
Material And Finish:

Standard 19 "rack-mounted installation method,The excellent design provides reliable protection for the termination of optical cables and the installation of optical fiber adapters,Compact in structure, small in size,light in weight, and available in multiple specifications , The access to and from optical fibers is convenient and flexible, and there is ample space for optical fiber storage, The multiple fixed positions of optical cables on the back make the fiber feeding convenient and flexible, and facilitate the protection of optical cable stripping ,The bending radius of optical fibers and pigtails shall not be less than 30mm

UK-ROHS Compliant

P.N:BXFP-12DX-S

Fiber Patch panel - SC - 12 port Duplex Rack-mount



PRODUCT CLASSIFICATION :

● Regional Availability	CHINA
● Portfolio	BEXLINE
● Product Type	(ODF) Patch Panel
● Unit	12 Port - Duplex SC Connector

General Specifications :

● Maximum Capacity	24C Duplex SC Connector - 48C Quad LC Connector
● ProductHeight	1 U
● Port Type	ST FC SC LC
● Connector Type	SC OR LC
● mountingtype	19"Standar Rack
● Size	483 * 350 * 44.5 mm
● G.weight	4.6 kgs
● Thickness	1.2 mm
● Style	Sliding Type
● Material	Cold Rolled Steel - Black

Material And Finish:

● Temperature Range	-25°C to +60°C (operating), -40°C to +70°C
● Humidity	≤90% at 30°C
● Air pressure	70kPa-106kPa

Standard 19 "rack-mounted installation method,The excellent design provides reliable protection for the termination of optical cables and the installation of optical fiber adapters,Compact in structure, small in size,light in weight, and available in multiple specifications , The access to and from optical fibers is convenient and flexible, and there is ample space for optical fiber storage, The multiple fixed positions of optical cables on the back make the fiber feeding convenient and flexible, and facilitate the protection of optical cable stripping ,The bending radius of optical fibers and pigtails shall not be less than 30mm

ROHS Compliant

UK-ROHS Compliant

www.bexline.co.uk

Fiber Patch panel - SC - 24 port Duplex Rack-mount



● Regional Availability	CHINA
● Portfolio	BEXLINE
● Product Type	(ODF) Patch Panel
● Unit	24 Port - Duplex SC Connector

● Maximum Capacity	48C Duplex SC Connector - 96C Quad LC Connector
● ProductHeight	1 U
● Port Type	ST FC SC LC
● Connector Type	SC OR LC
● mountingtype	19"Standar Rack
● Size	483 * 350 * 44.5 mm
● G.weight	4.6 kgs
● Thickness	1.2 mm
● Style	Sliding Type
● Material	Cold Rolled Steel - Black

● Temperature Range	-25°C to +60°C (operating), -40°C to +70°C
● Humidity	≤90% at 30°C
● Air pressure	70kPa-106kPa

ROHS Compliant

UK-ROHS Compliant

P.N:BXFP-144SX-S

Fiber Patch panel - SC - 48 port Duplex Rack-mount



PRODUCT CLASSIFICATION :

● Regional Availability	CHINA
● Portfolio	BEXLINE
● Product Type	(ODF) Patch Panel
● Unit	144 Port - Simplex SC Connector

● General Specifications :

● Maximum Capacity	144C Simplex SC Connector - 288C Duplex LC Connector
● ProductHeight	3U
● Port Type	ST FC SC LC
● Connector Type	SC OR LC
● mountingtype	19"Standar Rack
● Size	482.6 * 200 * 133 mm
● G.weight	3.2 kgs
● Thickness	1.2 mm
● Style	Stationary Type
● Material	Cold Rolled Steel - Black

Material And Finish:

● Temperature Range	-25°C to +60°C (operating), -40°C to +70°C
● Humidity	≤90% at 30°C
● Air pressure	70kPa-106kPa

Standard 19 "rack-mounted installation method,The excellent design provides reliable protection for the termination of optical cables and the installation of optical fiber adapters,Compact in structure, small in size,light in weight, and available in multiple specifications , The access to and from optical fibers is convenient and flexible, and there is ample space for optical fiber storage, The multiple fixed positions of optical cables on the back make the fiber feeding convenient and flexible, and facilitate the protection of optical cable stripping ,The bending radius of optical fibers and pigtails shall not be less than 30mm

ROHS Compliant

UK-ROHS Compliant

www.bexline.co.uk