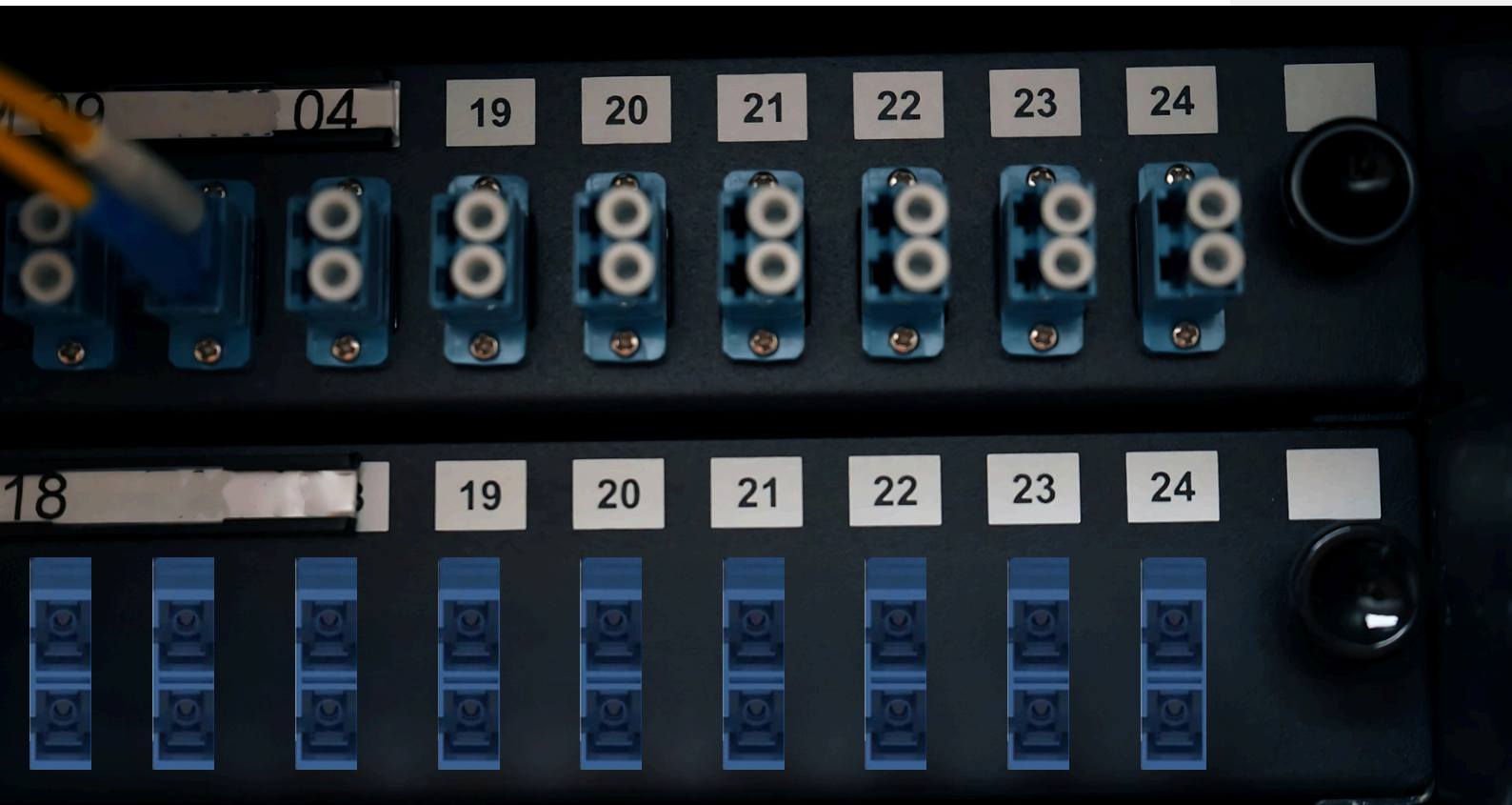
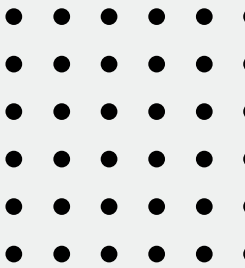


# Fiber Optic Patch Panel

## SC Simplex - SC Duplex

### Non-Sliding



# P.N:BXFP-24SX

Fiber Patch panel - SC - 24 port Simplex Rack-mount-Non\_Sliding



## PRODUCT CLASSIFICATION :

● Regional Availability	CHINA
● Portfolio	BEXLINE
● Product Type	(ODF) Patch Panel
● Unit	24 Port - Simplex SC Connector

## General Specifications :

● Maximum Capacity	24 Simplex SC Connector - 48 Duplex LC Connector
● ProductHeight	1 U
● Port Type	ST   FC   SC   LC
● Connector Type	SC OR LC
● mountingtype	19"Standar Rack
● Size	483* 200 * 44 mm
● G.weight	1.75 kgs
● Thickness	1 mm
● Style	Standing Type
● Material	Cold Rolled Steel - Black

## Material And Finish:

● Temperature Range	-25°C to +60°C (operating), -40°C to +70°C
● Humidity	≤90% at 30°C
● Air pressure	70kPa-106kPa

Rack-mounted optical fiber distribution framesareappliedindatanetwork communication and the termination and distributionofthemainopticalcablesat the central office end in optical fiber communicationsystems.Theycan conveniently realize the connection, distributionandschedulingofopticalfiber lines. It is applicable to small and medium-sizeddistributionsystemsforfiber- to-the-community, fiber-to-the-building, remotemodulesandwirelessbase stations. ST, SC, FC and LC can be selected.Itisconvenientandflexibleto enter and exit the optical fiber, with amplepaceforopticalfiberstorage.The structure is compact, easy to install and use,smallinsize,lightinweight, and available in multiple specifications.Theseuniquedesignsofferhigher performance and efficiency for your data centercabling.

ROHS Compliant

UK-ROHS Compliant

# P.N:BXFP-24DX

## Fiber Patch panel - SC - 24 port Duplex Rack-mount Non\_Sliding



### PRODUCT CLASSIFICATION :

● Regional Availability	CHINA
● Portfolio	BEXLINE
● Product Type	(ODF) Patch Panel
● Unit	24 Port - Duplex SC Connector

### General Specifications :

● Maximum Capacity	24C Duplex SC Connector - 96C Quad LC Connector
● Product Height	1 U
● Port Type	ST   FC   SC   LC
● Connector Type	SC OR LC
● mounting type	19" Standar Rack
● Size	483* 200 * 44 mm
● G.weight	1.75 kgs
● Thickness	1 mm
● Style	Standing Type
● Material	Cold Rolled Steel - Black

### Material And Finish:

● Temperature Range	-25°C to +60°C (operating), -40°C to +70°C
● Humidity	≤90% at 30°C
● Air pressure	70kPa-106kPa

Rack-mounted optical fiber distribution frames are applied in data network communication and the termination and distribution of the main optical cables at the central office end in optical fiber communication systems. They can conveniently realize the connection, distribution and scheduling of optical fiber lines. It is applicable to small and medium-sized distribution systems for fiber-to-the-community, fiber-to-the-building, remote modules and wireless base stations. ST, SC, FC and LC can be selected. It is convenient and flexible to enter and exit the optical fiber, with ample space for optical fiber storage. The structure is compact, easy to install and use, small in size, light in weight, and available in multiple specifications. These unique designs offer higher performance and efficiency for your data center cabling.

ROHS Compliant

UK-ROHS Compliant