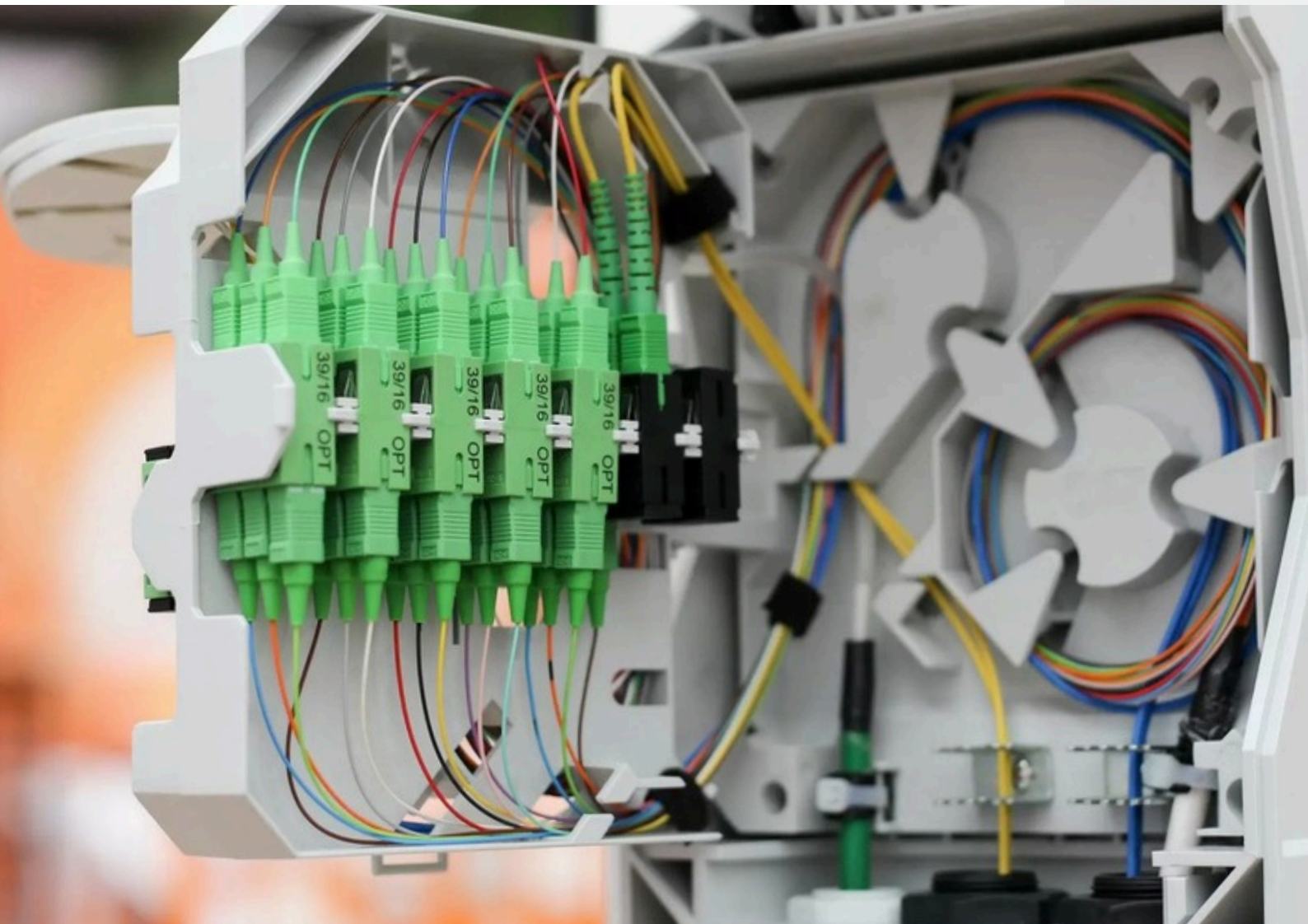
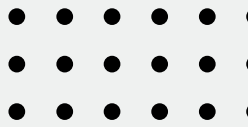


Fiber Termination Box

4 | 8 | 12 | 16 | 24 | 32 | 48
Core



P.N:BXTB-SC-S-4P

Fiber Optic Termination Box - SC - Simplex 4 Port



PRODUCT CLASSIFICATION :

● Regional Availability	CHINA
● Portfolio	BEXLINE
● Product Type	Termination Box
● Unit	4 Port Simplex

General Specifications :

● Maximum Capacity	4C Simplex SC Connector - 6C Duplex LC Connector
● Inlet/outlet	1 / 6
● Port Type	ST FC SC LC
● Connector Type	SC OR LC
● Level	hite IP65
● Size	205 * 135 * 40 mm
● G.weight	0.6 kg
● Thickness	1 mm
● Material	ABC
● Color	White Black

Material And Finish:

● Operating Temperature	-40~60
● Working environment	Indoor and Outdoor wall-mounted
● Function	FTTH network building - water-proof

The termination box is able to hold up to 4 or 6 subscribers. It is used as a termination point for the feeder cable to connect with drop cable in FTTH network system. It integrates fiber splicing, splitting, distribution, storage and cable connection in one solid protection box.

ROHS Compliant

UK-ROHS Compliant

P.N:BXTB-SC-S-8P

Fiber Optic Termination Box - SC - Simplex 8 Port



PRODUCT CLASSIFICATION :

● Regional Availability	CHINA
● Portfolio	BEXLINE
● Product Type	Termination Box
● Unit	8 Port Simplex

General Specifications :

● Maximum Capacity	8C Simplex SC Connector - 16C Duplex LC Connector
● Inlet/outlet	1 / 8
● Port Type	ST FC SC LC
● Connector Type	SC OR LC
● Level	hite IP65
● Size	200 * 250 * 50MM mm
● G.weight	0.33 kg
● Thickness	1 mm
● Material	ABS
● Color	White Black

Material And Finish:

● Operating Temperature	-40~60
● Working environment	Indoor and Outdoor wall-mounted
● Function	FTTH network building - water-proof

The termination box is able to hold up to 8 or 16 subscribers. It is used as a termination point for the feeder cable to connect with drop cable in FTTH network system. It integrates fiber splicing, splitting, distribution, storage and cable connection in one solid protection box.

ROHS Compliant

UK-ROHS Compliant

P.N:BXTB-SC-S-12P

Fiber Optic Termination Box - SC - Simplex 12 Port



PRODUCT CLASSIFICATION :

● Regional Availability	CHINA
● Portfolio	BEXLINE
● Product Type	Termination Box
● Unit	12 Port Simplex

General Specifications :

● Maximum Capacity	12C Simplex SC Connector - 24C Duplex LC Connector
● Inlet/outlet	1 / 12
● Port Type	ST FC SC LC
● Connector Type	SC OR LC
● Level	hite IP65
● Size	250 * 220 * 70 MM mm
● G.weight	0.8 kg
● Thickness	1 mm
● Material	ABS
● Color	White Black

Material And Finish:

● Operating Temperature	-40~60
● Working environment	Indoor and Outdoor wall-mounted
● Function	FTTH network building - water-proof

The termination box is able to hold up to 12 or 24 subscribers. It is used as a termination point for the feeder cable to connect with drop cable in FTTH network system. It integrates fiber splicing, splitting, distribution, storage and cable connection in one solid protection box.

ROHS Compliant

UK-ROHS Compliant

P.N:BXTB-SC-S-16P

Fiber Optic Termination Box - SC - Simplex 16Port



PRODUCT CLASSIFICATION :

● Regional Availability	CHINA
● Portfolio	BEXLINE
● Product Type	Termination Box
● Unit	16 Port Simplex

General Specifications :

● Maximum Capacity	16C Simplex SC Connector - 32C Duplex LC Connector
● Inlet/outlet	1 / 16
● Port Type	ST FC SC LC
● Connector Type	SC OR LC
● Level	hite IP65
● Size	320 * 250 * 105 MM mm
● G.weight	1.1 kg
● Thickness	1 mm
● Material	ABS
● Color	White Black

Material And Finish:

● Operating Temperature	-40~60
● Working environment	Indoor and Outdoor wall-mounted
● Function	FTTH network building - water-proof

The termination box is able to hold up to 16 or 32 subscribers. It is used as a termination point for the feeder cable to connect with drop cable in FTTH network system. It integrates fiber splicing, splitting, distribution, storage and cable connection in one solid protection box.

ROHS Compliant

UK-ROHS Compliant

P.N:BXTB-SC-S-24P

Fiber Optic Termination Box - SC - Simplex 24Port



PRODUCT CLASSIFICATION :

● Regional Availability	CHINA
● Portfolio	BEXLINE
● Product Type	Termination Box
● Unit	24 Port Simplex

General Specifications :

● Maximum Capacity	24C Simplex SC Connector - 48C Duplex LC Connector
● Inlet/outlet	1 / 24
● Port Type	ST FC SC LC
● Connector Type	SC OR LC
● Level	hite IP65
● Size	330 * 280 * 155 MM mm
● G.weight	1.5 kg
● Thickness	1 mm
● Material	ABS
● Color	White Black

Material And Finish:

● Operating Temperature	-40~60
● Working environment	Indoor and Outdoor wall-mounted
● Function	FTTH network building - water-proof

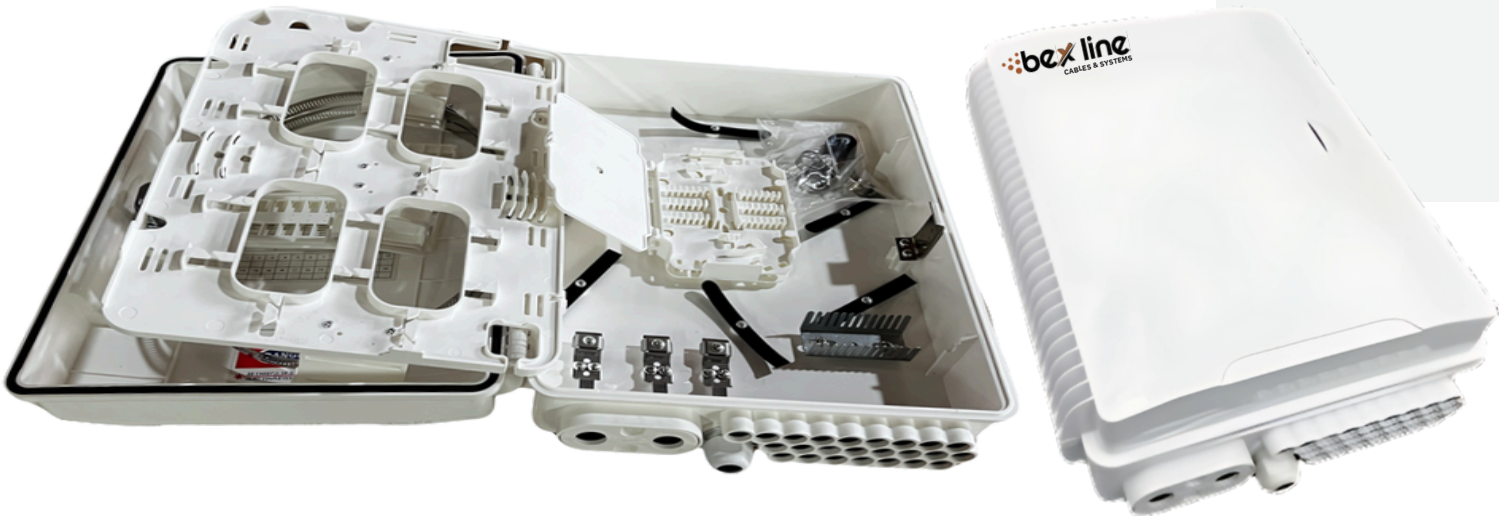
The termination box is able to hold up to 24 or 48 subscribers. It is used as a termination point for the feeder cable to connect with drop cable in FTTH network system. It integrates fiber splicing, splitting, distribution, storage and cable connection in one solid protection box.

ROHS Compliant

UK-ROHS Compliant

P.N:BXTB-SC-S-32P

Fiber Optic Termination Box - SC - Simplex 32Port



PRODUCT CLASSIFICATION :

● Regional Availability	CHINA
● Portfolio	BEXLINE
● Product Type	Termination Box
● Unit	32 Port Simplex

General Specifications :

● Maximum Capacity	32C Simplex SC Connector - 64C Duplex LC Connector
● Inlet/outlet	1 / 32
● Port Type	ST FC SC LC
● Connector Type	SC OR LC
● Level	hite IP65
● Size	355 * 270 * 120 MM mm
● G.weight	1.75 kg
● Thickness	1 mm
● Material	ABS
● Color	White Black

Material And Finish:

● Operating Temperature	-40~60
● Working environment	Indoor and Outdoor wall-mounted
● Function	FTTH network building - water-proof

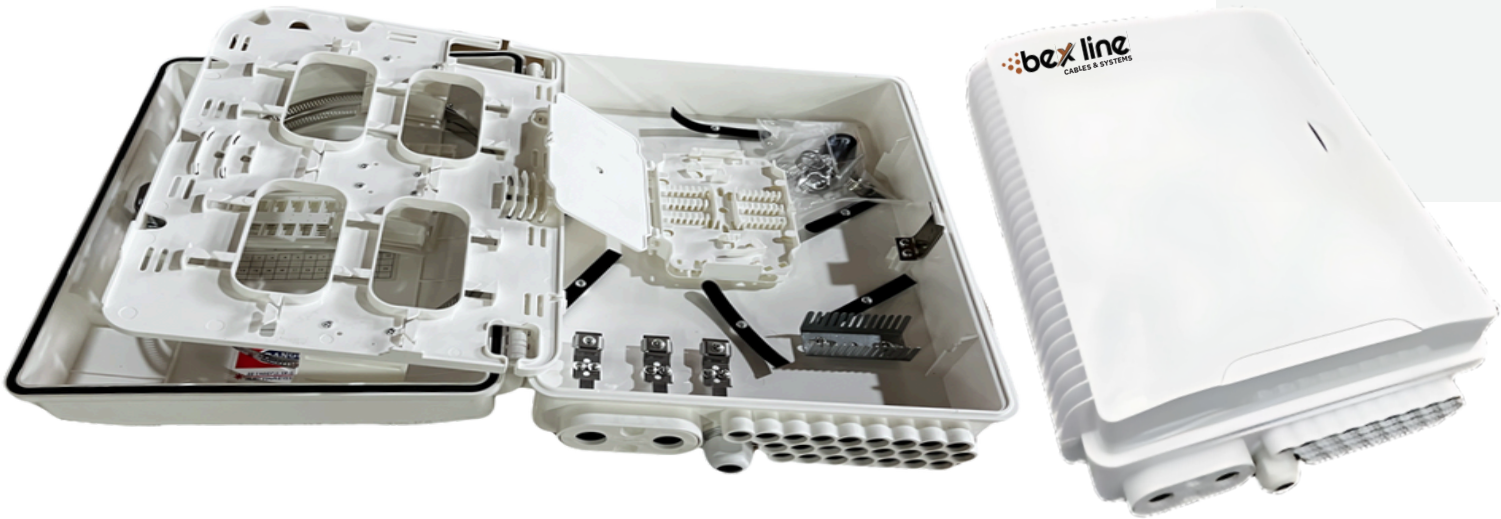
The termination box is able to hold up to 32 or 64 subscribers. It is used as a termination point for the feeder cable to connect with drop cable in FTTH network system. It integrates fiber splicing, splitting, distribution, storage and cable connection in one solid protection box.

ROHS Compliant

UK-ROHS Compliant

P.N:BXTB-SC-S-48P

Fiber Optic Termination Box - SC - Simplex 48Port



PRODUCT CLASSIFICATION :

● Regional Availability	CHINA
● Portfolio	BEXLINE
● Product Type	Termination Box
● Unit	48 Port Simplex

General Specifications :

● Maximum Capacity	48C Simplex SC Connector - 96C Duplex LC Connector
● Inlet/outlet	1 / 48
● Port Type	ST FC SC LC
● Connector Type	SC OR LC
● Level	hite IP65
● Size	355 * 270 * 120 MM mm
● G.weight	1.75 kg
● Thickness	1 mm
● Material	ABS
● Color	White Black

Material And Finish:

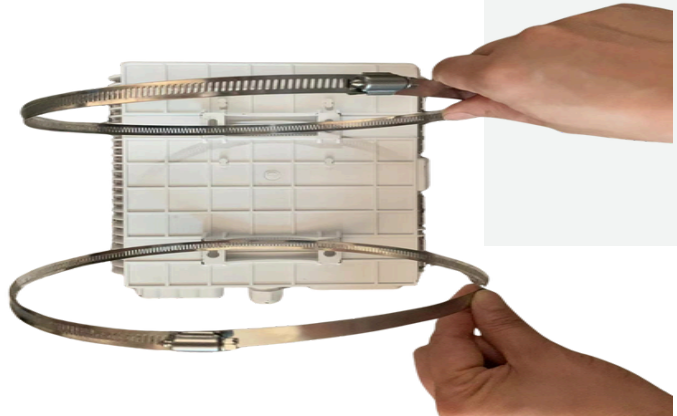
● Operating Temperature	-40~60
● Working environment	Indoor and Outdoor wall-mounted
● Function	FTTH network building - water-proof

The termination box is able to hold up to 48 or 96 subscribers. It is used as a termination point for the feeder cable to connect with drop cable in FTTx network system. It integrates fiber splicing, splitting, distribution, storage and cable connection in one solid protection box.

ROHS Compliant

UK-ROHS Compliant

Standard Accessories



General Specifications :

● Screw	4mm*40mm 4 pcs
● Expansion bolt	M6 4pcs
● Cable tie	3mm*8mm 4pcs
● Heat-shrink sleeve	60mm 8 pcs
● Key	1pcs
● Hose clamps	2pcs

Applications :

- Wall mounting and pole mounting installtion FTTH pre-installation and filed installation
- 4-7mm cable ports suitable for 2x3mm indoor FTTH drop cable and outdoor figure 8 FTTH self
- supporting drop cable

Features :

- 1、 Total enclosed structure.
- 2、 Material: ABS, wet-proof、 water-proof、 dustproof、 anti-aging , protection level up to IP65.
- 3、 Clamping for feeder cable and drop cable, fiber splicing, fixation, storage distribution ... etc all in one.
- 4 、 Cable, pigtails, patch cords are running through own path without disturbing each other, cassette type SCadaptor installation , easy maintenance.
- 5、 Distribution panel can be flipped to the right, feeder cable can be placed in a cup-joint way, easy for maintenance and installation.
- 6 、 Box can be installed by the way of wall-mounted or pole d-mounted,suitable for both indoor and outdoor uses .